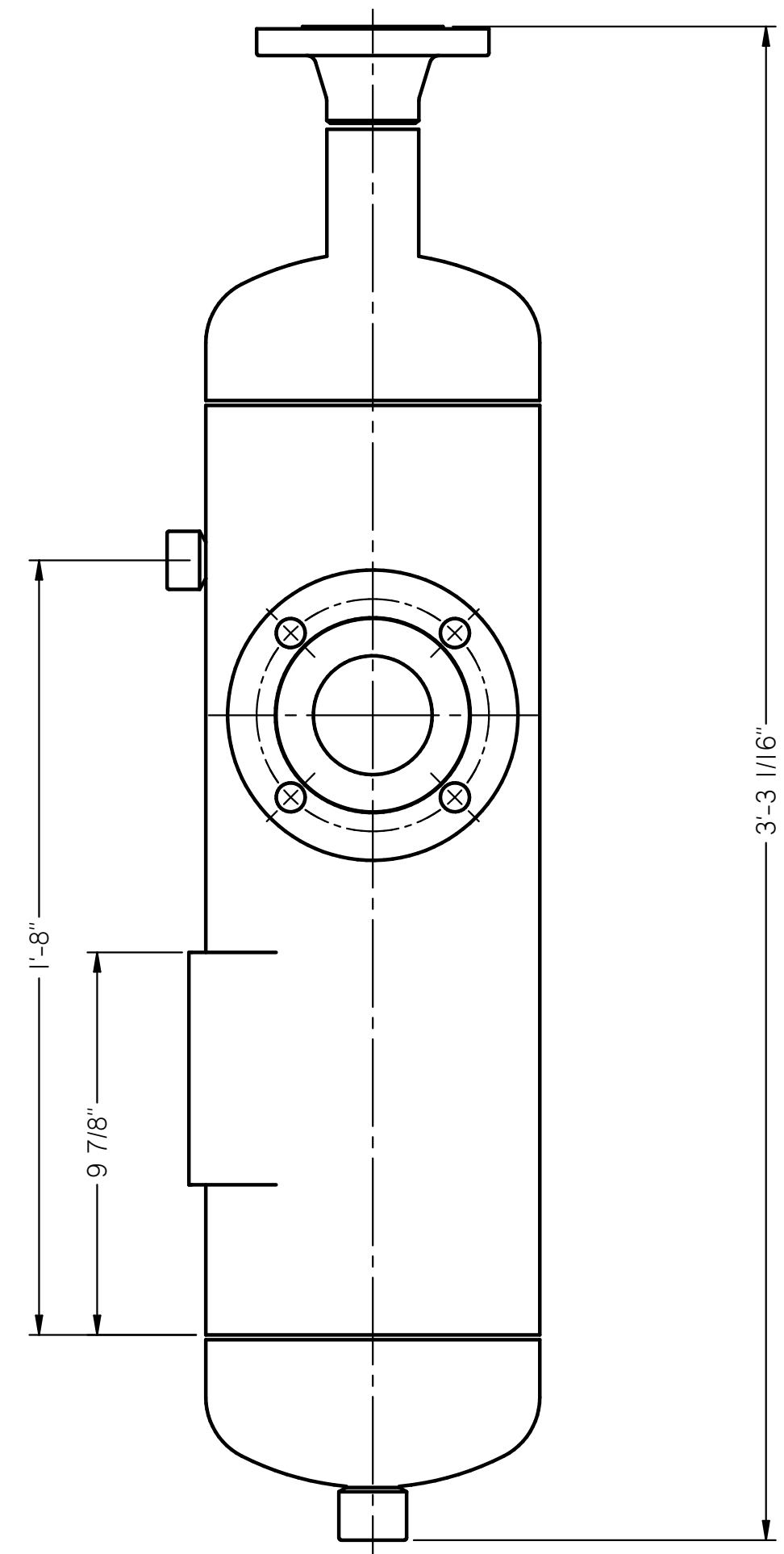
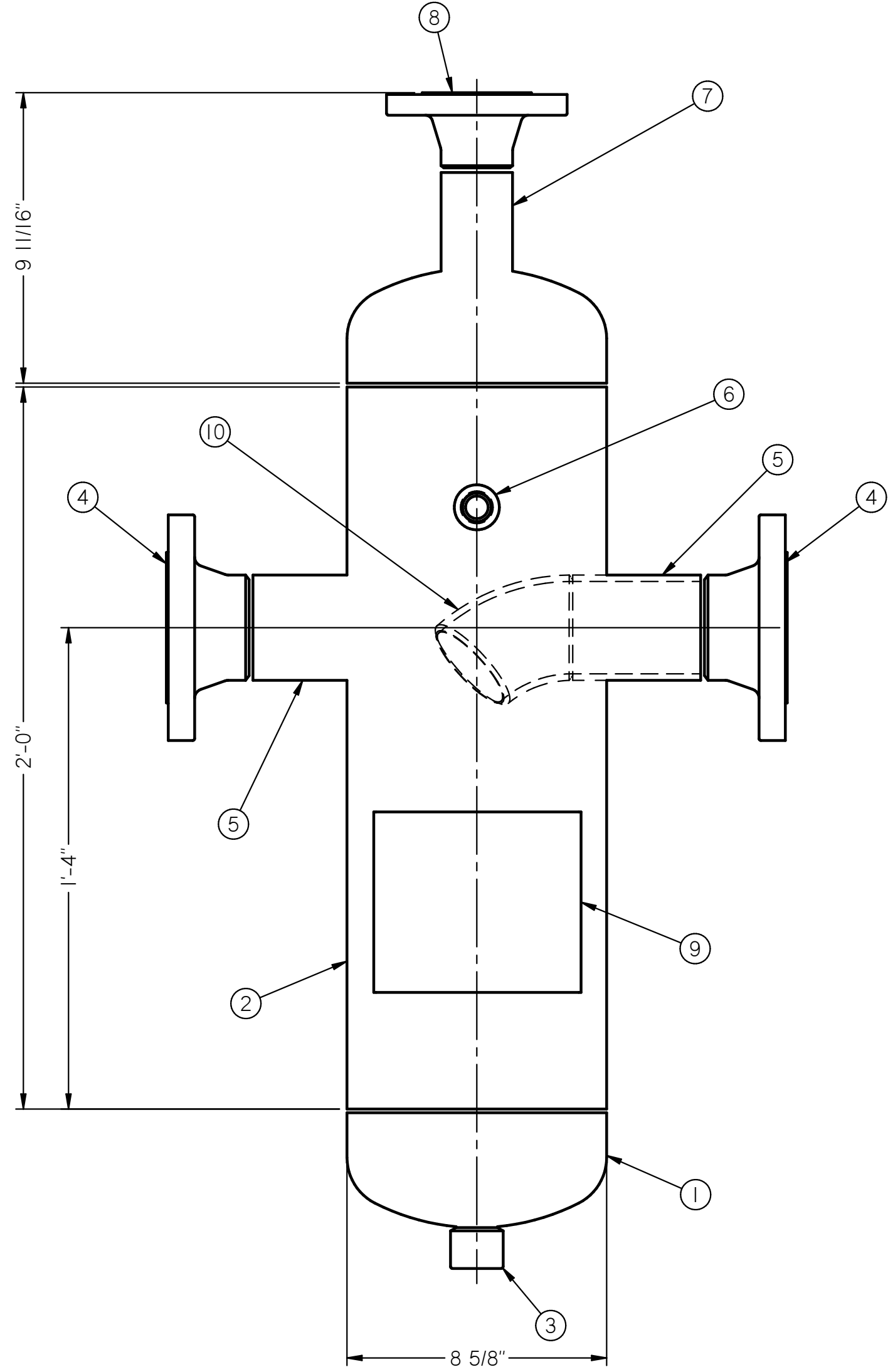



BILL OF MATERIAL				
Item	Quantity	Title	Material	Specific Heat No.
1	2	8 5/8" OD x .328" MIN THK 2:1 ELLIPTICAL HEAD	SA516-70	A21X
2	1	8.625 OD PIPE x 24" LG	Stainless Steel, 316	395L
3	1	1" 3000# MACH THD COUPLING	Stainless Steel, 316	
4	2	3" STD RFWN WELD NECK FLANGE	Stainless Steel, 316	E181286
5	2	3" x STD SMLS. PIPE	Stainless Steel, 316	302652
6	1	3/4" 3000# MACHINED COUPLING	Stainless Steel, 316	
7	1	2" x XH SMLS. PIPE	A312 TP316 SS	5582204
8	1	2" 150# WNRF FLANGE SCH 40S BORE	A182 316 SS	274795
9	1	NAMEPLATE BRACKET	Stainless Steel, 316	
10	1	3" SCH 40S BUTT WELD 45° LR ELBOW	A403 316 SS	S1601





 Tulsa, Ok. P.O. Box 471453
 Atlanta, Ga. Tulsa, Oklahoma 74147

DATE: 2-14-2019	SCALE:	DRAWN BY: DB	APPRD:	REVISION: 00
STANDARD 8 5/8" OD INLET VESSEL 316 SS 100 / 300 MBTUH BTEX CONDENSOR UNIT				
CUSTOMER:		DRAWING NUMBER:		
		1401 - STD INLET VESSEL		

DATE	REVISION DISCRPTION	BY: